

DC SERIES

DC (Deep cycle) Series batteries are designed for deep discharge application, with special chemical formula for plates active paste material, slightly stronger electrolyte and low temperature design, which can withstand repeated deep cycling application, such as Solar Energy System, Golf Trolley, Electric

Application

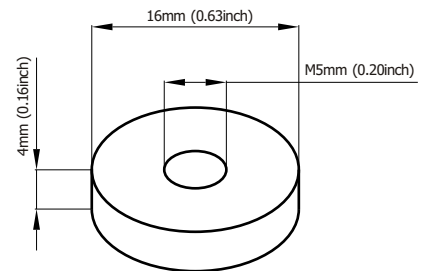
- Solar Energy System
- Golf Cars and Buggies
- Electric Powered Vehicles
- Wheel Chairs
- Power Tools
- Electric Powered Toys
- Control System
- Vacuum Cleaners
- Medical Equipments
- UPS

General Features

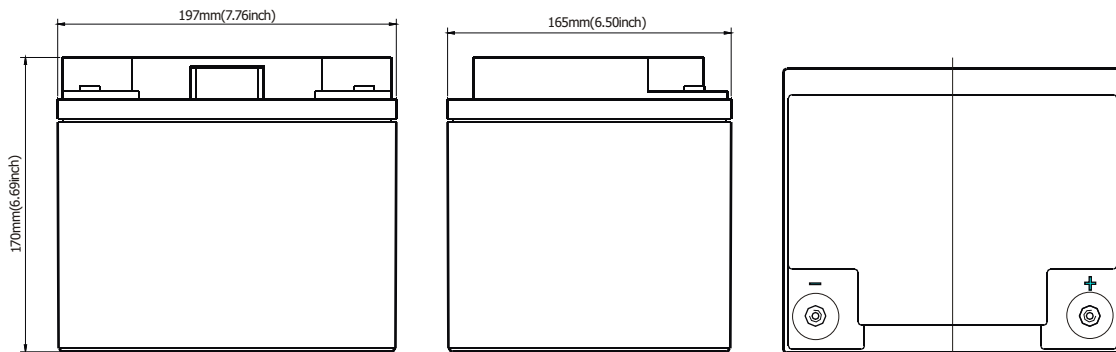
- Sealed and maintenance free operation.
- Non-Spillable construction design.
- ABS containers and covers(UL94HB, UL94V-0) optional.
- Safety valve installation for explosion proof.
- High quality and high reliability.
- Exceptional deep discharge recovery performance.
- Low self discharge characteristic.
- Flexibility design for multiple install positions.

Construction

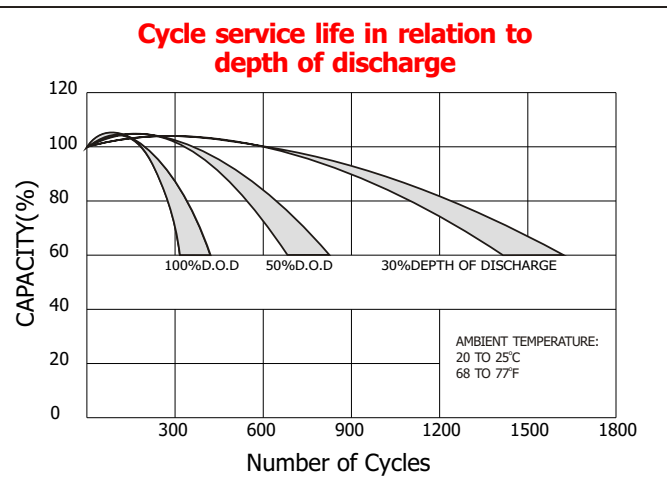
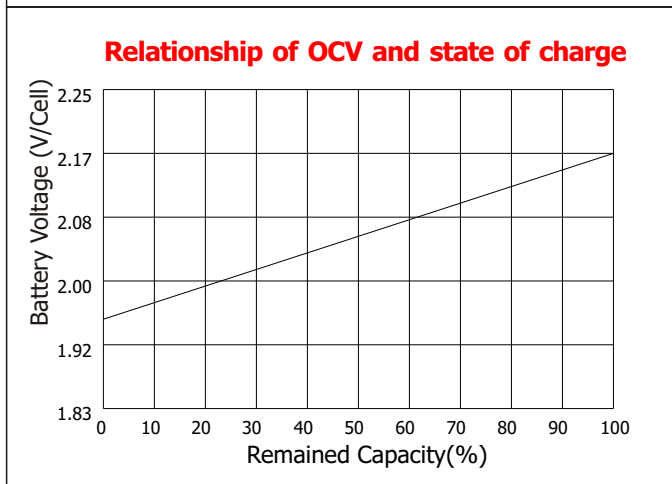
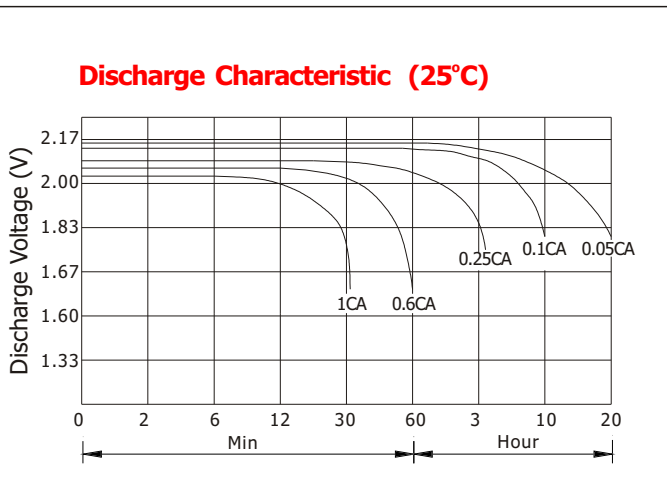
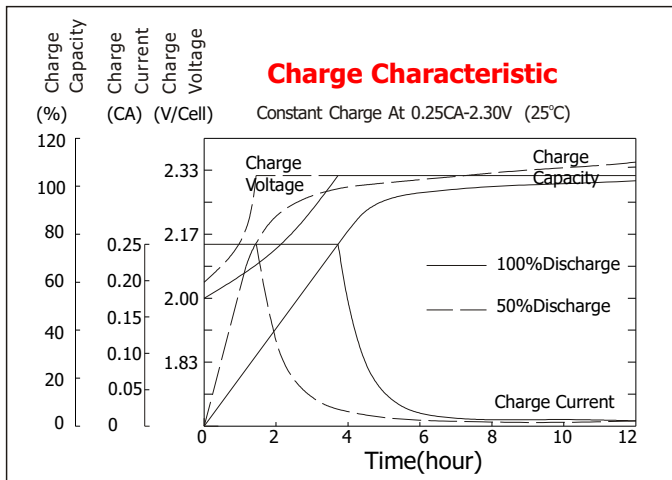
- ComponentRaw material
- PositiveLead dioxide
- NegativeLead
- ContainerABS
- CoverABS
- SealantEpoxy Resin
- Safety valveEPDR
- TerminalCopper
- SeparatorFibre glass
- ElectrolyteSulfuric acid



Terminal Dimensions



Battery Model	LDC12-45			
Designed Cycle Life	> 400 cycles @ -0.5CA to 9.6V			
Capacity(25°C)	20HR(2.05A,1.75V)	10HR(4.0A,1.75V)	5HR(6.46A,1.75V)	1HR(22.8A,1.75V)
	45AH	40AH	38.5AH	27.1AH
Dimensions	Length	Width	Height	Total Height
	197mm(7.76inch)	165mm(6.50inch)	170mm(6.69inch)	170mm(6.69inch)
Approx. Weight	14.3Kg (31.56 lbs)			
Internal Resistance	Full charged at 25°C: 0.0095 Ohm			
Self Discharge	3% of capacity declined per month at (25°C)			
Capacity Affected by Temp.(20HR)	40°C	25°C	0°C	-15°C
	102%	100%	85%	65%
Charge Voltage(25°C)	Cycle use		Float use	
	14.4-15V(-30mV/ °C), max. Current: 13.5A		13.6-13.8V(-20mV/ °C)	



Constant current discharge ratings-amperes at 25°C

F. V/Time	5MIN	10MIN	15MIN	30MIN	1HR	3HR	5HR	10HR	20HR
1.60V	183	114	86.0	52.4	28.4	12.5	7.89	4.68	2.48
1.67V	172	108	82.7	50.1	28.1	12.0	7.47	4.11	2.17
1.70V	148	106	83.4	43.6	27.4	11.4	7.80	4.60	2.39
1.75V	135	100	79.2	42.4	27.9	11.8	7.70	4.55	2.34
1.80V	125	90.4	73.0	41.1	26.4	11.2	7.60	4.50	2.32
1.85V	102	80.8	65.8	39.8	26.0	11.0	7.50	4.40	2.20

Constant power discharge ratings-watts at 25°C

F. V/Time	5MIN	10MIN	15MIN	30MIN	1HR	3HR	5HR	10HR	20HR
1.60V	321	206	157	94.4	51.3	22.1	12.9	8.53	4.48
1.67V	310	201	155	92.5	51.0	21.4	12.8	8.48	4.32
1.70V	292	199	154	86.6	50.0	20.5	12.7	8.43	4.27
1.75V	294	198	152	84.0	49.2	20.0	12.6	8.32	4.16
1.80V	269	195	141	80.1	46.3	19.4	12.2	8.07	4.05
1.85V	244	185	128	75.0	43.6	18.8	11.8	7.98	4.00